



TEMP PRODUCTS

WHY NAPA® TEMP ACCUMULATOR / FILTER DRIERS

As an essential part of a compressor replacement job, we realize that a defective or failed Accumulator / Filter Drier can cause more system damage and headache than its worth. That is why we take the time to validate our units to the highest quality standards to provide our customers a quality product they can rely on.

EXPERIENCE THE DIFFERENCE

P/N TEM 408911

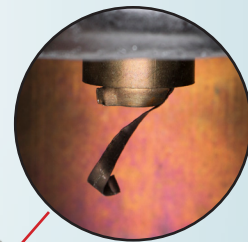
FORD CROWN VICTORIA (11-06)

LINCOLN TOWN CAR (11-06)

MERCURY GRAND MARQUIS (11-06)



NAPA® Temp manufacturing processes ensure metal shavings are not left in the unit.



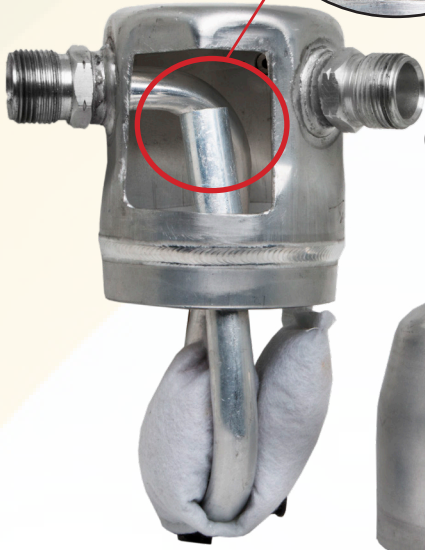
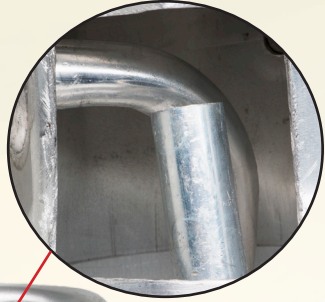
Competitor unit with metal shaving due to a poor manufacturing process, may come loose, travel to the compressor, and cause system failure.



NAPA® Temp Accumulator / Filter Driers feature proper welds for a durable, leak-free design, high-quality desiccant for appropriate absorption and necessary gaskets, o-rings and seals for easy installation. We also ensure that all of our units are compatible with both R134a and R12 refrigerants.

P/N TEM 208597

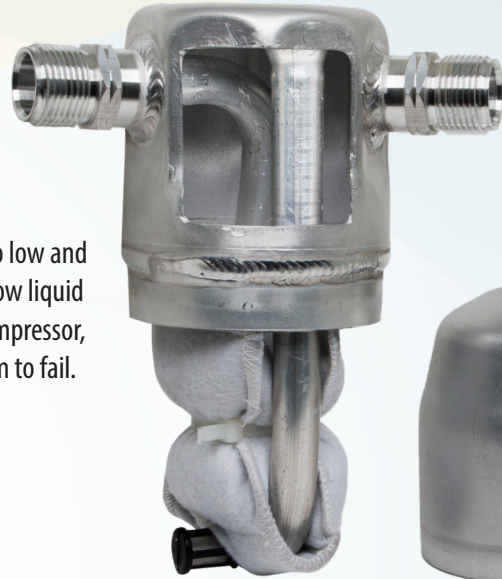
- BUICK LESABRE (97-94)
- BUICK PARK AVENUE (97-94)
- OLDSMOBILE 88 (97-94)
- OLDSMOBILE 98 (96-94)
- OLDSMOBILE LSS (97-96)
- OLDSMOBILE REGENCY (98-97)
- PONTIAC BONNEVILLE (97-94)



Competitor's outlet tube is too low and close to the inlet. This will allow liquid refrigerant to travel to the compressor, which could cause the system to fail.



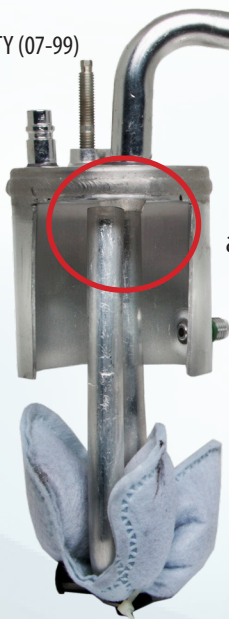
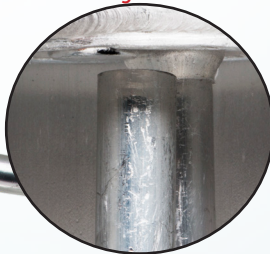
The NAPA® Temp outlet tube is the appropriate height to prevent liquid refrigerant from traveling to the compressor.



P/N TEM 408904

- FORD EXCURSION (05-00)
- FORD F-250 SUPER DUTY (07-99)
- FORD F-350 (07-99)
- FORD F-350 SUPER DUTY (07-99)
- FORD F-450 (07-99)
- FORD F-450 SUPER DUTY (07-99)
- FORD F53 (07-99)
- FORD F-550 SUPER DUTY (07-99)

Missing inlet tube



The competitor's missing inlet tube causes the outlet tube to be positioned incorrectly, allowing liquid refrigerant to enter the outlet tube, resulting in compressor failure.



The NAPA® Temp unit is designed with appropriate tubes to prevent liquid refrigerant from traveling to the compressor.

